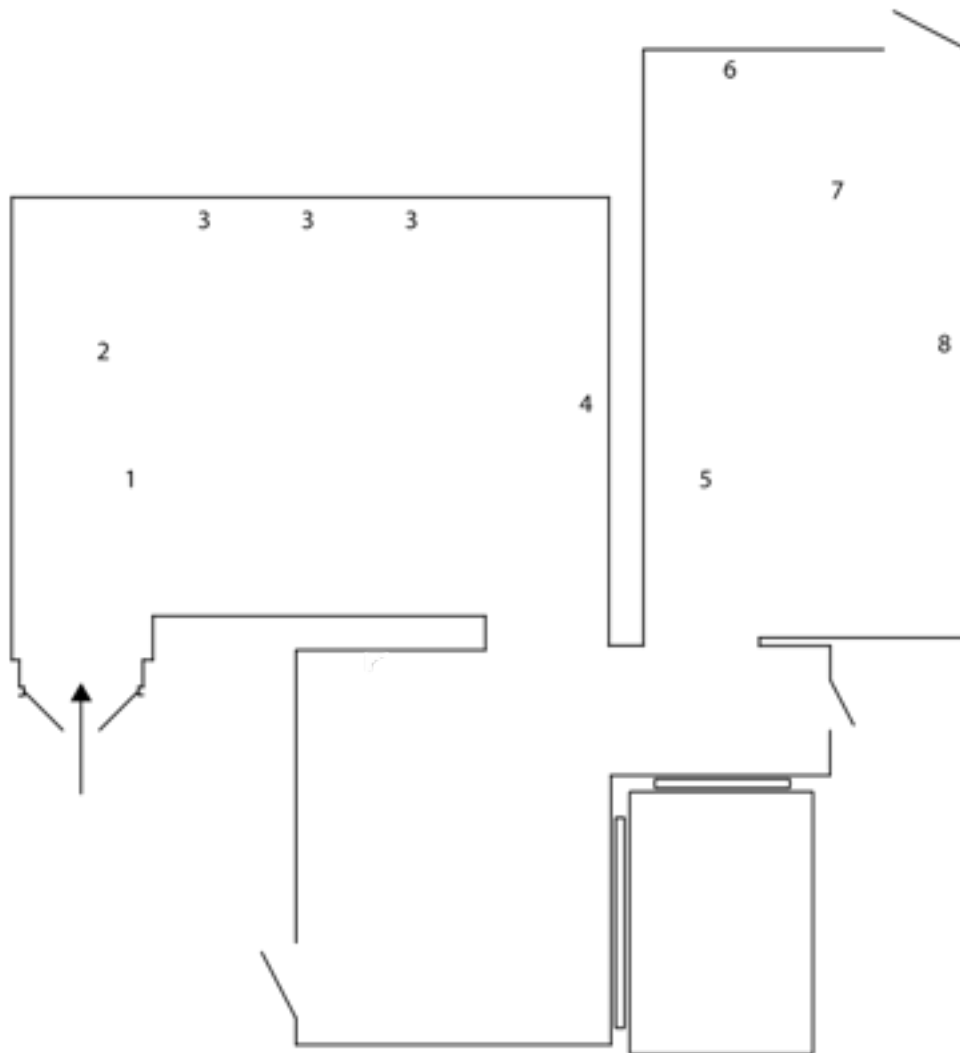


Morning uber, evening oscillators

18th November – 17th December 2016

PV: 17th November 2016, 6 pm

VALIE EXPORT, Eloise Hawser, Sebastian Lloyd Rees, Hannah Perry



1.

Eloise Hawser

Karoshi 1, 2014-2015

3D prototyped head, ZP131 powder (now obsolete) on steel plinth

115 x 26 x 21 cm

2.

Eloise Hawser

Untitled, 2016

Adjusted rucksack straps, film and folder under glass

183 x 63.5 x 28.5 cm

3.

VALIE EXPORT

Drei Figurationszeichen Drei Körperkonfigurationen (Three Characters Figuration Three Bodies Configuration),

1972-1976

Set of 3 gelatin silver prints

36.5 x 55 cm (each)

4.

Sebastian Lloyd Rees

Those who go back (2001.09.12 - 2016.18.04), 2016

Industrial paint, plywood, pollution, paper

200 x 130 cm

5.

Eloise Hawser

(Blue) Karoshi, 2014-2015

3D print, 5005- 030-045-110, metal key

83.5 x 19 x 75.5 cm

6.

Hannah Perry

Baby Brain, 2016

HD video, sound

16 min 45 sec

7.

Eloise Hawser

Ala alka tysorine, 2016

Compressed and uncompressed radiator grill, 3d printed head melded with photocopier tray, paper, brushed steel veneer

143 x 61 x 30 cm

8.

Sebastian Lloyd Rees

Symbolic cities (2001.09.12 - 2016.10.05), 2016

Industrial paint, plywood, pollution, paper

200 x 170 cm